

# ABS LIFTING STATION PIRANHAMAT 100 AND 120

**Compact faecal pumping unit for direct connection of one WC and also suitable for connection of one wash-hand basin, one shower and one bidet.**

## Applications

The PIRANHAMAT 100/120 pumping unit has been designed for the removal of effluent from a WC located below the sewer backwash level or where the effluent cannot flow by gravity into a sewer. It is also possible to connect one wash-hand basin, one shower and one bidet to the unit. Thank's to its compact design and the use of small bore piping, the PIRANHAMAT 100/120 pumping unit is also suitable for installation in an existing house as well as in the renovation of old buildings.

## Construction

The PIRANHAMAT 100/120 is supplied ready for using and comprises a modern gas and odour tight plastic tank fitted with a powerful ABS PIRANHA grinder pump which is controlled automatically by the integral level control system. The PIRANHAMAT 100/120 is equipped with an electronic control unit with high level alarm (PIRANHAMAT 120 with additional alarm buzzer). A non-return valve for the discharge line is also supplied as standard. The white tank of high quality synthetic material is resistant to all common toilet cleaning fluids.

The ABS PIRANHA pump itself is fitted with a special cutting device and is capable of pumping faecal matter, toilet paper of various thickness and also sanitary articles which might accidentally be dropped into the toilet, without any problem via a small bore pipe system of a size from 25 mm diameter. It is supplied with a push-on self sealing connection for the toilet at the rear of the unit, as well as push-in connection ports for one wash-hand basin, one shower and one bidet. The discharge connection can be made on either side of the unit and means that the discharge pipe can exit left or right as is found more suitable for the particular installation. Where the users are controlled members of the public and usage cannot be monitored or where more effluent sources are to be connected, installation of the SANIMAT series is recommended.

## Maximum Medium Temperature

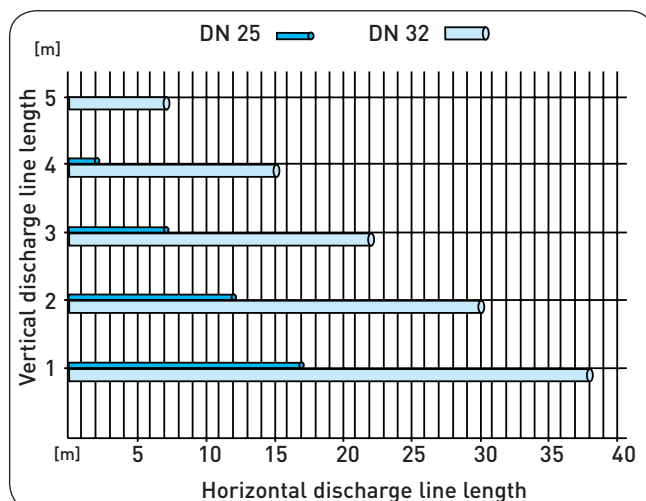
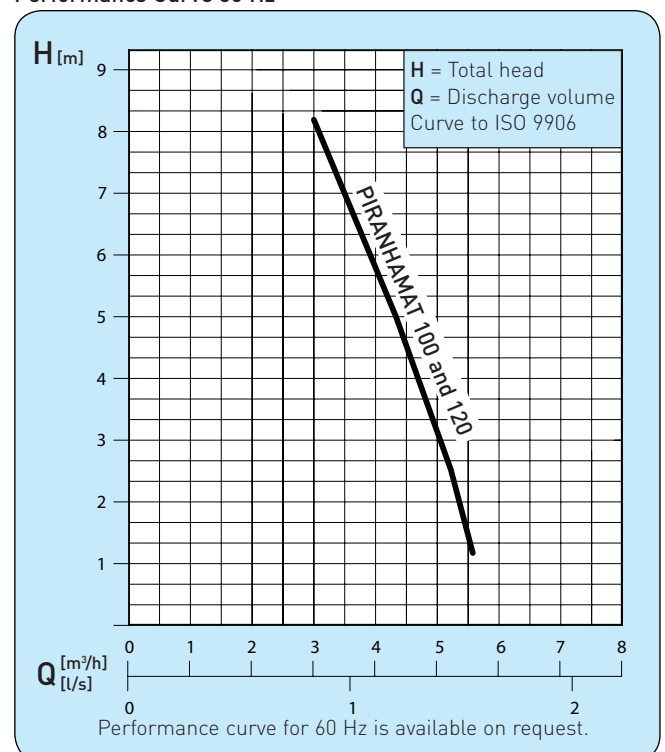
40° C continuous use, 60° C intermittent use (max. 5 min).

Maximum discharge line lengths for the optimum functioning of the unit. Allowance has been made for two 90° bends and one ABS non-return valve



- Compact unit ready to plug in and suitable for direct euro toilet connection
- With ABS patented PIRANHA cutting system for pumping faecal matter and also sanitary articles which might accidentally be dropped into the toilet
- Attractive corrosion resistant synthetic tank
- Maintenance friendly unit with easy access lid (no screws)
- Carbon filter fitted to reduce odours

## Performance Curve 50 Hz



# ABS LIFTING STATION PIRANHAMAT 100 and 120

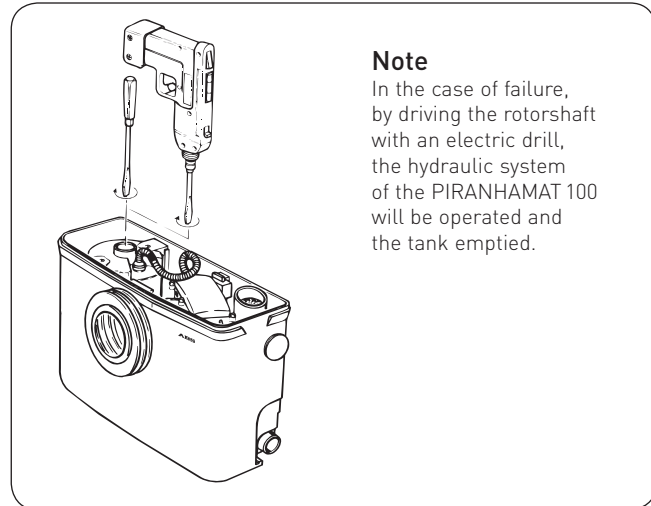
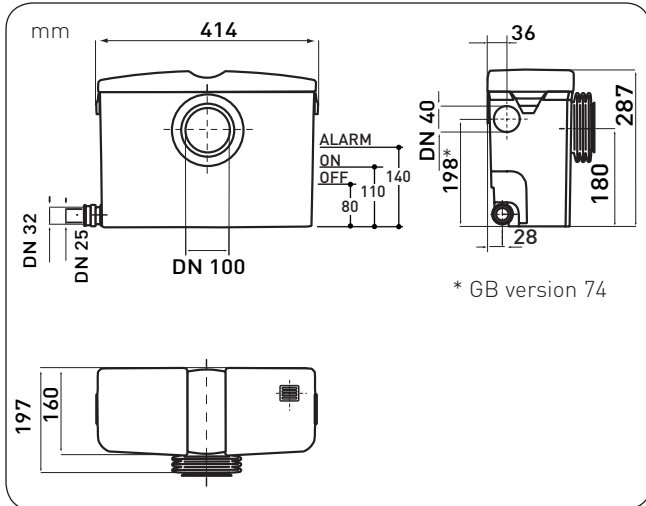
## Technical Data

Type	Motor power*		Speed at 50 Hz min <sup>-1</sup>	Rated voltage V	Rated current A	Cable length** m	Weight*** kg
	P <sub>1</sub> kW	P <sub>2</sub> kW					
PIRANHAMAT 100	1.1	0.68	2900	220-240 ~	4.84	2	9
PIRANHAMAT 120	1.1	0.68	2900	220-240 ~	4.84	2	9

\*P<sub>1</sub> = Power taken from mains; P<sub>2</sub> = Power at motor shaft.      \*\* = with Euro-plug with earthing: Cable H07RN-F  
\*\*\* = additional weight of the hand membrane pump = 13 kg

Standard execution: Cable length 2 m, tank with pump(s), automatic control system with alarm. Non-return valve system with junction piece

## Dimensions



## Installation Example

